
Network



Weekly Newsletter August 6 , 2023



Why do we bless our pets? Ever wonder why we invite the furry, scaly, fuzzy members of our families to church on the first Sunday of August for pet Sunday? Yes, we love these critters as much as we love you, but there's another simple reason. We bless them because they remind us that the God of creation is at work among us. These animals that we are blessed to care for are a gift from the very One who created them.

And they remind us that the love of God is visible in bunny noses and doggie kisses when we sometimes need to see it most. So bring those lovable creatures to church this Sunday! Bring the stuffies that keep your kiddos company at night; they matter, too! And if your kitties would rather stay home like mine, know that our blessings carry over the spaces as we think of them and love them from afar. See you in church!

Love,
Pastor Leslie

Pet Sunday

Sunday, August 6, 9:00 am

Bring the *whole* family — all socially adapted creatures, great and small, are welcome. Bring a lawn chair and sunglasses to the Celebration Patio area on the north side of the Fellowship Hall and enjoy this outdoor worship experience.

Survey coming!

The Saint Andrew Council is conducting an audit of our membership and gathering information from members and friends of Saint Andrew that will better help us in planning worship and programming to serve our congregation and community. A brief survey will be coming in your email soon; it should take less than 10 minutes to complete. Your input is invaluable as we plan for the year ahead, and accurate records help ensure we are making the best uses of the resources entrusted to us.



"One in the Spirit" Devotional Yoga

Transforming the mind, body, and spirit

Morning Flow Yoga - Tuesdays, 8:30-9:30 am

Afternoon Flow Yoga - Tuesdays, 4:30-5:30 pm

Adaptive Yoga

Wednesdays, 8:30-9:15 am

Bike & Yoga

Thursday, August 10

Meet in the parking lot at 8:30 am with an 8:45 am departure. Bike rides will last approximately 1-1 ½ hours. Upon return we will roll out the yoga mats in the Fellowship Hall for 45 minutes of yoga focused on restoring our "biking muscles."



August Sunday Funday

Sunday, August 13; 5:30-7:30 pm

Build your spiritual fire when you join us for devotions, a picnic, campfire and yard games! Bring your family and invite some friends! Please sign up using the QR code or [click here](#).



Food Pantry Current Needs

The following items are currently needed for the Saint Andrew food pantry:

Canned Tuna
Canned Chicken
Spaghetti Sauce
Spaghetti Noodles
Canned Fruit
Canned Vegetables
Boxed Rice (please no bagged rice)
Pancake Mix
Pancake Syrup
Cereal
Peanut Butter
Jelly

Donated items can be placed in the baskets found at each entrance. Thank you!



LWR School Supply and Personal Care Kits

Social Ministry is again collecting items for school supply and personal care kits in support of Lutheran World Relief (LWR).

A display with detailed information and grab n' go shopping lists with requested items is available in the Narthex along with a basket to receive donated items. LWR is very specific regarding donated items. If the items are not exact, they are destroyed rather than used or donated elsewhere.

Thank you for your continued support to assist those in need across the globe. God's blessings to you all.

INCLUDE THE FOLLOWING IN EACH SCHOOL KIT

- ☐ **FOUR** 70-sheet notebooks of wide- or college-ruled paper, approximately 8" x 10 ½"; no loose leaf paper
- ☐ **ONE** 30-centimeter ruler, or a ruler with centimeters on one side and inches on the other
- ☐ **ONE** pencil sharpener
- ☐ **ONE** pair of blunt scissors (safety scissors with embedded steel blades work well)
- ☐ **FIVE** unsharpened #2 pencils with erasers; secure together with a rubber band
- ☐ **FIVE** black or blue ballpoint pens (no gel ink); secure together with a rubber band
- ☐ **ONE** box of 16 or 24 crayons
- ☐ **ONE** 2 ½" eraser
- ☐ **ONE** sturdy drawstring backpack-style cloth bag, approximately 14" x 17" with shoulder straps (no standard backpacks)

INCLUDE THE FOLLOWING IN EACH PERSONAL CARE KIT

- ☐ **ONE** light-weight bath-size towel (between 20" x 40" and 52" x 27"), dark color recommended
- ☐ **TWO** or three bath-size bars of soap equaling 8 to 9 oz., any brand, in original wrapping
- ☐ **ONE** adult-size toothbrush in its original packaging*
- ☐ **ONE** sturdy comb, remove packaging
- ☐ **ONE** metal nail clippers (attached file optional), remove packaging

** Toothbrush multi-packs may be used by sealing an individual toothbrush in a business-size envelope; no plastic bags or wrap*

Sexton Positions Open

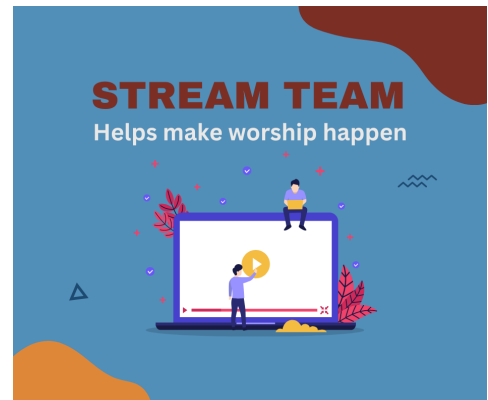
Saint Andrew is seeking 2-4 high school students to share Sunday Sexton responsibilities beginning this summer for the 9:00 am service and continue into the fall. The role of the Sexton is to collaborate with the pastor, staff, and

lay leadership of the congregation to help maintain campus order during Sunday worship and activities at Saint Andrew Lutheran Church. This is a paid position and monthly schedules are worked out based on availability. If you are interested, please send an email to personnel@salc-wausau.org or call or text Wayne Johnson @715-370-5263 and additional information will be provided and an interview set up if desired. Job shadowing can be set up with the current Sexton, Nick Josiger.

Stream Team Volunteers

Stream Team is the backbone of Saint Andrew's live and in-person worship services and is looking for additional volunteers for either of two roles:

- **Video Switcher:** follows a service order and selects what is viewed on the livestream. Switches between different cameras and the ProPresenter slide feed assisting the viewers to see worship and follow along.
- **ProPresenter Operator:** follows a service order and cues to advance slides at the proper time to assist the congregation in-person and online follow the service and participate in worship.



Volunteers can serve as little as once a month and arrive about a half hour before worship begins. You can pick your schedule or be assigned to services. If this opportunity to serve this community and learn new skills interests you, contact jonathan@salc-wausau.org to learn more or sign up!

Pastoral Visits

If you, or someone you know, need a pastoral visit during a hospital stay, please let us know by contacting the church office at 715-842-3333.

Summer Worship

Sundays
9:00 am

Summer Office Hours

Monday-Thursday
8:30 am-4:30 pm

Recorded Worship on Spectrum

Sunday worship is livestreamed on the SALC Facebook page each week. The recorded service can then be found on Charter/Spectrum channel 980 on the following days and times:

Tuesday 2:00 pm
Thursday 10:30 am

Friday 6:00 pm
Sunday 7:00 am

August Calendar

About

Worship

Education

Calendar

Contact Us

Saint Andrew Lutheran Church

(715) 842-3333

office@salc-wausau.org

www.salc-wausau.org

