
Network



Weekly Newsletter December 7, 2023

240

Kennon Callahan wrote *Twelve Keys for an Effective Church* in the 1980s. I have used his *keys* in congregations where growth and change were a high priority.

One of his keys has to do with worship attendance, sanctuary size, and the number of worship services. Callahan argues, for instance, that eliminating a worship service (from two to one, for example) reduces average attendance by 20%. Conversely, adding a service increases average attendance by 20%.

Additionally, Callahan teaches that churches become “uncomfortably full” at 80% of seating capacity. In other words, people don’t want to be packed into the church like sardines in a can. We like some elbow room. At 80% people start to perceive that the church is too full and will stop attending. People start to believe that they are not needed. At Saint Andrew, 80% is about 240 worshipers. The attendance this past Sunday was 240. We hit the magic number way faster than I anticipated which is very good news!

Now, the ball is in your court. If we can average 240 at worship for 10 weeks, I will recommend the addition of a second, Sunday morning service beginning after Easter. As a church staff, we are committed to leading worship in a way

that is meaningful and that feeds your spirit. We will bring our best energy into each worship experience and ask that you return that energy back to us.

Meanwhile, we are also planning the addition of other worship opportunities — both midweek and Sunday evening. Start dates for those will be announced in just a few weeks.

Thank you for your commitment to Saint Andrew! Invite! Invite! Invite!

Pastor Gary

2024 Budget Review Meeting

Sunday, December 10, 10:15 am, Activity Room

As of November 28, 2023 we have received almost enough pledges to support a proposed 2024 spending plan of \$548,000 which is approximately \$77,000 below our 2023 spending plan of \$625,000. Prior to congregational approval at the Annual Meeting on January 28, 2024, the proposed 2024 Spending Plan will be presented for review and questions. The Finance Ministry invites everyone to attend this informative meeting.



Give the Gift of Blood

Thursday, December 14 - 12:00-5:00 pm, Fellowship Hall

Donors can give blood every 56 days. Walk-ins are welcome, however, appointments are helpful and can be made online at www.redcrossblood.org or call

1-800-REDCROSS (1-800-733-2767). Two volunteers are needed to help with registration, refreshments, or other support. Please contact Jan Nelson at jannelson.79@gmail.com or 715-470-0038 if you have questions or want to volunteer.

Advent/Christmas 2023 Schedule

December 10 - Advent 3: Pr. Sharon Fox Bogen

December 17 - Advent 4: Pr. Gary Froseth

December 24 - Christmas Eve: Pr. Gary Froseth

4 pm and 6 pm - Candlelight Worship with Chancel and Handbell Choirs

10 pm - Candlelight, Contemplative Worship

ELCA World Hunger Advent Study and Advent Calendars Available

The glory of the Lord shall be revealed, and all people shall see it together.

Isaiah 40:5

Explore our biblical past and find the many ways the glory of the Lord is revealed to us. Study booklets and calendars are available in the Narthex.



Making Christmas Bright

Amid all the hustle and bustle of Christmas preparations, there are some opportunities to really brighten Christmas for some people who are struggling.

- Social Ministry has "adopted" two families through the Catholic Charities' St. Lawrence Community Program to provide them with Christmas gifts. If you would like to help, please choose an ornament with a gift noted on the back from the display in the Narthex then bring the **unwrapped** gift back to church and place in the basket in the Narthex by ***Sunday, December 17***. Thank you!
- Adult, warm winter gloves are currently needed at the Good Shepherd Shelter and are very much appreciated by those who are outside most of the day. They will be collected until January 30, 2024 and can be placed in the marked basket in the Narthex.

Coming in January

Social Ministry will be starting a new program to help school age kids! Watch for details coming soon.

Christmas books and devotionals for children, adults, and families are now on display at the Library! Pick up a couple books to add to your child's bedtime routine or a devotional to keep you focused on Christ through the holidays. Happy reading!



If you or someone you know would appreciate receiving a Christmas Food Basket, please call the church office at 715-842-3333. Baskets will be ready to be picked up at the south entrance on ***Thursday, December 21 between 3:00 and 4:00 pm.***

If you would like to donate items for these baskets, please bring them by ***Tuesday, December 19***. Non-perishable items can be placed in the baskets inside the church entrances and hams can be put in the marked area in the freezer.

Items now being received:

- Ham (Half Hams Preferred)
Canned vegetables
Stuffing Mix
Canned Pie Filling
5 lb. Bag of Potatoes
Canned Cranberry Sauce
Christmas Candy Treats

*Mt Calvary
Lutheran Church
(503 Schmidt Ave., Rothschild)
Cookie Walk*

*Saturday
December 9
9:00 - 11:00 am*

*\$8.00 per pound
Candies & Lefse are sold
separately*



A Ministry Opportunity at Pilgrim Lutheran Church, Wausau

Saturday, December 16, 2:00 pm

709 Weston Ave., Wausau

Enjoy a Christmas singalong followed by light refreshments.



Blue Christmas Service

Thursday, December 21, 6:00 pm

***Mt. Calvary Lutheran Church, 503 Schmidt
Ave, Rothschild***

All are welcome to gather on the longest night of the year for a Blue Christmas service to honor grief and renew hope giving time and space to remember loved ones, acknowledge and honor grief, remember the gift of hope given through Jesus Christ, and know we are not alone. Hosting

Congregations are: Pilgrim Lutheran Church, Mt. Calvary Lutheran Church, Saint Andrew Lutheran Church, and Saint John Lutheran Church, Mosinee.

Saint Andrew Christmas Eve Traffic Plan

In order to help reduce traffic congestion on Christmas Eve between the 4:00 and 6:00 pm services, the following directions have been suggested by the Marathon County Sheriff's Department.

Traffic Flow-See Map Below

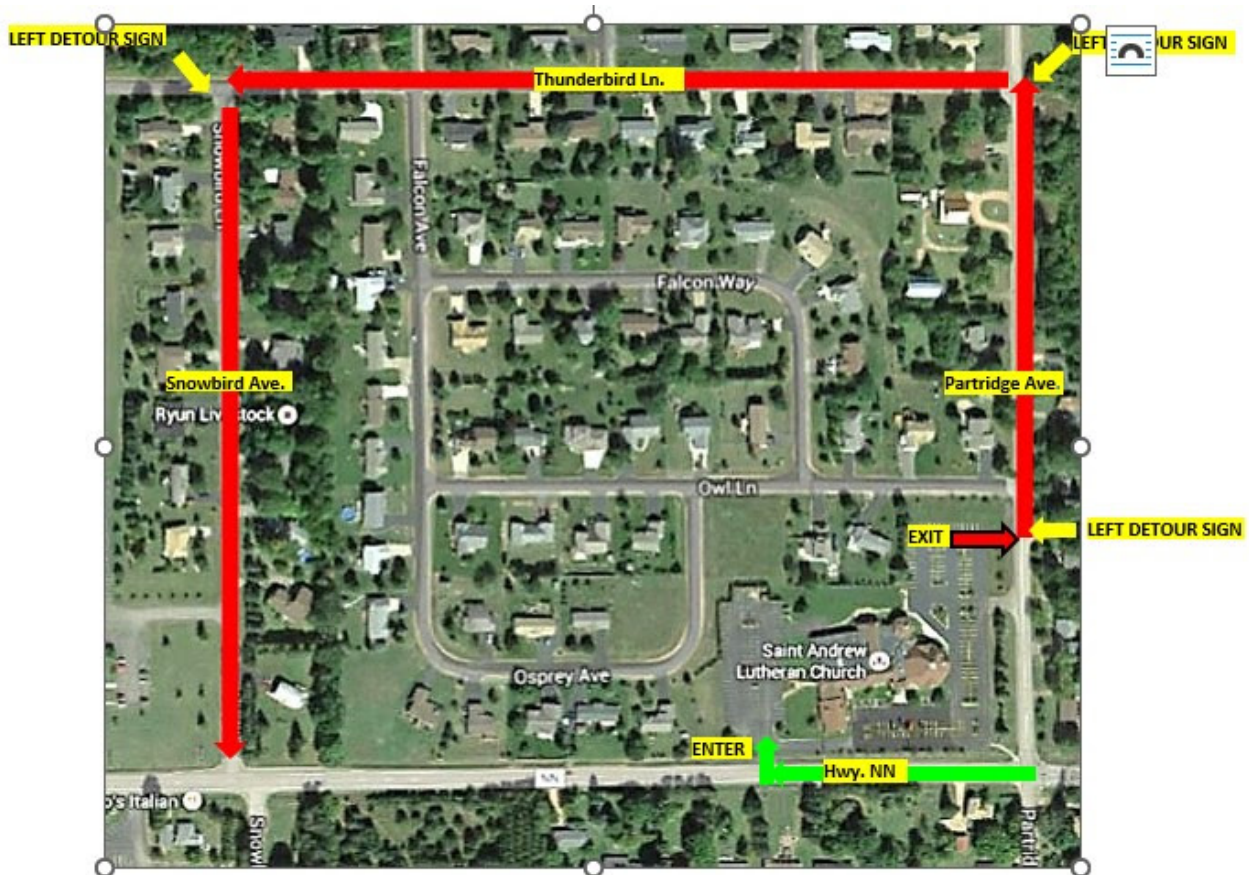
Enter

Hwy NN into Saint Andrew parking lot

Exit

1. East parking lot, turn left (north) onto Partridge Ave.
2. Turn left (west) onto Thunderbird Ln.
3. Turn left (south) onto Snowbird Ave. to Hwy. NN

Exit Route is approximately .7 miles





"One in Spirit" Yoga

Transforming the mind, body, and spirit

It's December!

Here's what is planned for Yoga at Saint Andrew:

- **100% of donations in December will go towards "Good Gifts!"**

See display at class and select your preferences!

- **Make & Take Yoga Mat Cleaner**

Before/After classes weeks of Dec. 4 & Dec. 11

- **Yoga Practice of Hope**

Flow Yoga: December 5, 8:30 am & 4:30 pm

Adaptive/Chair Yoga: December 6, 8:30 am

- **Yoga Practice of Peace**

December 12, 8:30 am & 4:30 pm

Adaptive/Chair Yoga: December 13, 8:30 am

- **Yoga Practice of Light**

December 19, 8:30 am & 4:30 pm

Adaptive/Chair Yoga: December 20, 8:30 am

- **No Classes week of December 25**

Looking forward to your presence!



Noisy Offering

Bring your noisy coins to church to drop in the Noisy Offering can on **Sunday, December 17** in support of ELCA World Hunger/Good Gifts.

Weekend Snow Shoveling Help Needed

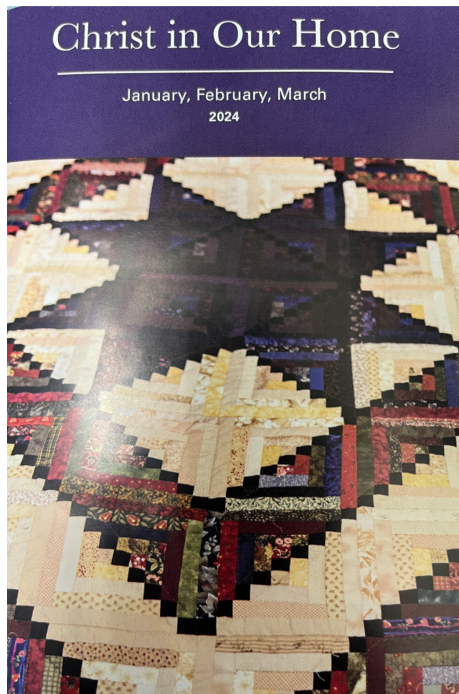
A few more weekend shovelers are still needed! If you are able to help out, please sign up on the sheet on the Narthex bulletin board or contact Patrick

at patrick@salc-wausau.org.



End of Year Contributions

Any 2023 contributions or 2024 prepaid contributions you wish to be recorded on your 2023 Annual Contributions Statement must be received at Saint Andrew before Saturday, December 30, 2023 or postmarked on or before Sunday, December 31, 2023.



Christ in Our Home Devotionals

The 2024 first quarter of "Christ In Our Home" devotionals are available in the Narthex. All are welcome to pick up a copy for your family.

Epiphany Pageant - Save the Date

Sunday, January 7

More details and sign-up coming soon!

Worship

Sundays

9:00 am

*(The Sanctuary is
T-Coil Hearing Loop Enabled)*

Recorded Worship on Spectrum

Sunday worship is livestreamed on the



Office Hours
Monday-Thursday
8:30 am-4:30 pm

SALC Facebook page each week. The recorded service can then be found on channel 980 through Charter/Spectrum on the following days and times:

Tuesday - 2:00 pm

Thursday - 10:30 am

Friday - 6:00 pm

Sunday - 7:00 am

SALC Calendar

About

Worship

Education

Calendar

Contact Us

Saint Andrew Lutheran Church

(715) 842-3333

office@salc-wausau.org

www.salc-wausau.org

