

# Network



## Weekly Newsletter December 14, 2023

### Noisy Offering

Bring your noisy coins to church to drop in the Noisy Offering can on ***Sunday, December 17*** in support of ELCA World Hunger/Good Gifts.



## ELCA World Hunger Advent Study and Advent Calendars Available

*The glory of the Lord shall be revealed, and all people shall see it together.*

Isaiah 40:5

Explore our biblical past and find the many ways the glory of the Lord is revealed to us. Study booklets and calendars are available in the Narthex.



## Check It Out At the SALC Library

Christmas books and devotionals for children, adults, and families are now on display at the Library! Pick up a couple books to add to your child's bedtime routine or a devotional to keep you focused on Christ through the holidays. Happy reading!



## Making Christmas Bright

Amid all the hustle and bustle of Christmas preparations, there are some opportunities to really brighten Christmas for some people who are struggling.

- Social Ministry has "adopted" two families through the Catholic Charities' St. Lawrence Community Program to provide them with Christmas gifts. The "gift tags" have all been taken! Thank you to all who have taken one and are providing a gift to those who may not otherwise have gifts under the tree this

year. A reminder that the **unwrapped** gifts need to be brought to church by ***Sunday, December 17*** and can be placed in the marked basket in the Narthex.

- Adult, warm winter gloves are currently needed at the Good Shepherd Shelter and are very much appreciated by those who are outside most of the day. They will be collected until January 30, 2024 and can be placed in the marked basket in the Narthex.

### Coming in January

Social Ministry will be starting a new program to help school age kids! Watch for details coming soon.

---

## Christmas Food Baskets

If you or someone you know would appreciate receiving a Christmas Food Basket, please call the church office at 715-842-3333. Baskets will be ready to be picked up at the south entrance on ***Thursday, December 21 between 3:00 and 4:00 pm.***

If you would like to donate items for these baskets, please bring them by ***Tuesday, December 19.*** Non-perishable items can be placed in the baskets inside the church entrances and hams can be put in the marked area in the freezer.

Items now being received:

- Ham (Half Hams Preferred)
- Canned vegetables
- Stuffing Mix
- Canned Pie Filling
- 5 lb. Bag of Potatoes
- Canned Cranberry Sauce
- Christmas Candy Treats

---

## Advent/Christmas 2023 Schedule

***December 17 - Advent 4:*** Pr. Gary Froseth

***December 24 - Christmas Eve:*** Pr. Gary Froseth

**4 pm and 6 pm**

Candlelight Worship with  
Chancel and Handbell Choirs

**10 pm**

Candlelight, Contemplative Worship





***\*4 pm worship will be livestreamed***

---

## **Saint Andrew Christmas Eve Traffic Plan**

In order to help reduce traffic congestion on Christmas Eve between the 4:00 and 6:00 pm services, the following directions have been suggested by the Marathon County Sheriff's Department. **See traffic flow map below.**

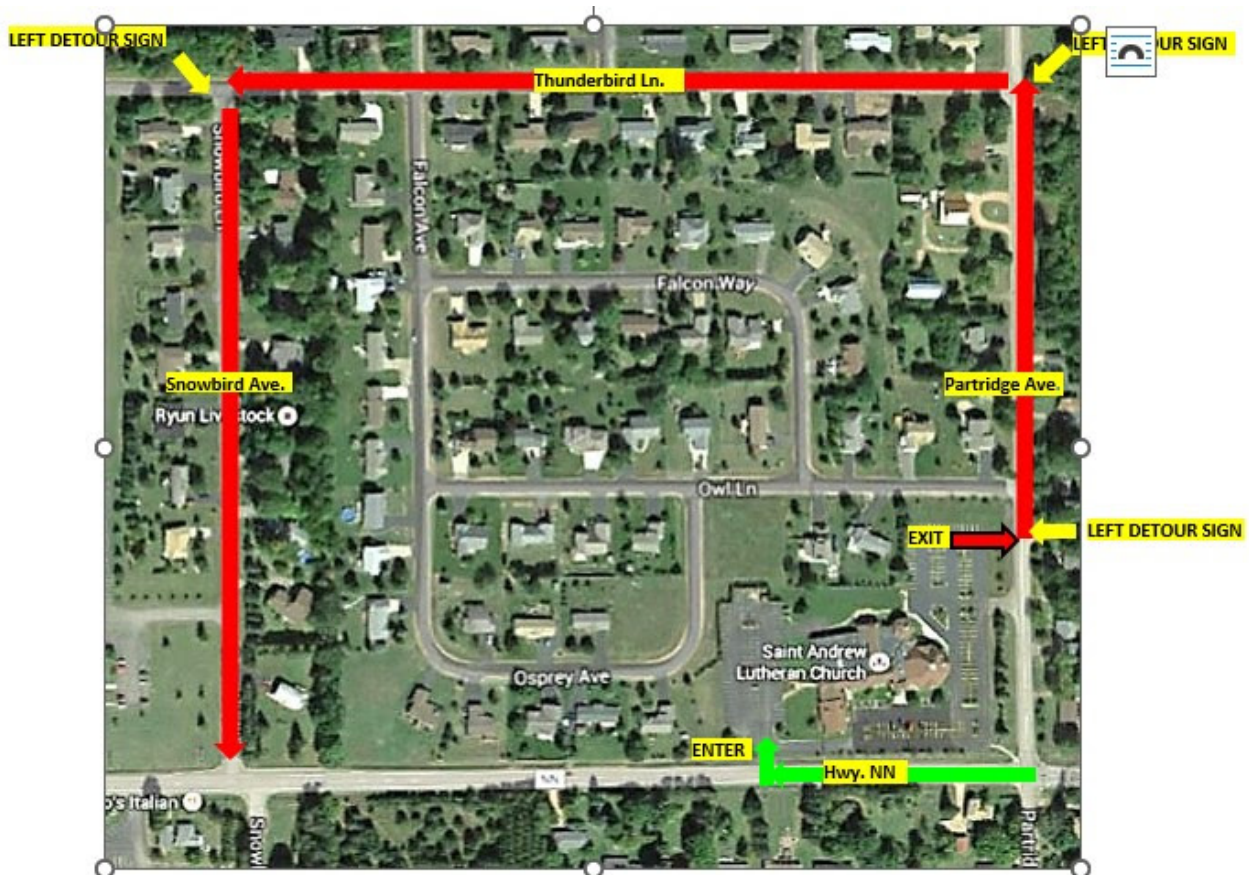
### **Enter**

**Hwy NN into Saint Andrew parking lot**

### **Exit**

1. East parking lot, turn left (north) onto Partridge Ave.
2. Turn left (west) onto Thunderbird Ln.
3. Turn left (south) onto Snowbird Ave. to Hwy. NN

Exit Route is approximately .7 miles



---

**A Ministry Opportunity at Pilgrim Lutheran Church,  
Wausau**



**Saturday, December 16, 2:00 pm**

**709 Weston Ave., Wausau**

Enjoy a Christmas singalong followed by light refreshments.

---



## **Blue Christmas Service**

**Thursday, December 21, 6:00 pm**

**Mt. Calvary Lutheran Church, 503 Schmidt Ave, Rothschild**

All are welcome to gather on the longest night of the year for a Blue Christmas service to honor grief and renew hope giving time and space to remember loved ones, acknowledge and honor grief, remember the gift of hope given through Jesus Christ, and know we are not alone. Hosting

Congregations are: Pilgrim Lutheran Church, Mt. Calvary Lutheran Church, Saint Andrew Lutheran Church, and Saint John Lutheran Church, Mosinee.

---



**"One in Spirit" Yoga**

*Transforming the mind, body, and spirit*

# It's December!

**Here's what is planned for Yoga at Saint Andrew:**

- **100% of donations in December will go towards "Good Gifts!"**

**See display at class and select your preferences!**

- **Yoga Practice of Light**

**December 19, 8:30 am & 4:30 pm**

**Adaptive/Chair Yoga: December 20, 8:30 am**

## Looking forward to your presence!

**Note: There will be no classes on Tuesday or Wednesday, December 26 & 27**

---

## **Weekend Snow Shoveling**

## Help Needed

A few more weekend shovelers are still needed! If you are able to help out, please sign up on the sheet on the Narthex bulletin board or contact Patrick at [patrick@salc-wausau.org](mailto:patrick@salc-wausau.org).



---

## Saint Andrew Spending Plan Update



	November	YTD
Your Gifts Returned to God	\$55,379.04	\$507,494.62
Ministry Costs for SALC	<u>\$39,927.21</u>	<u>\$547,475.75</u>
Gifts Greater (Less) Than Costs	\$15,452.83	(\$ 39,981.13)

*For more information, please see the Finance and Stewardship bulletin board just outside the office.*

---

## End of Year Contributions

Any 2023 contributions or 2024 prepaid contributions you wish to be recorded on your 2023 Annual Contributions Statement must be received at Saint Andrew before Saturday, December 30, 2023 or postmarked on or before Sunday, December 31, 2023.

---

## Notice of Constitutional Amendments

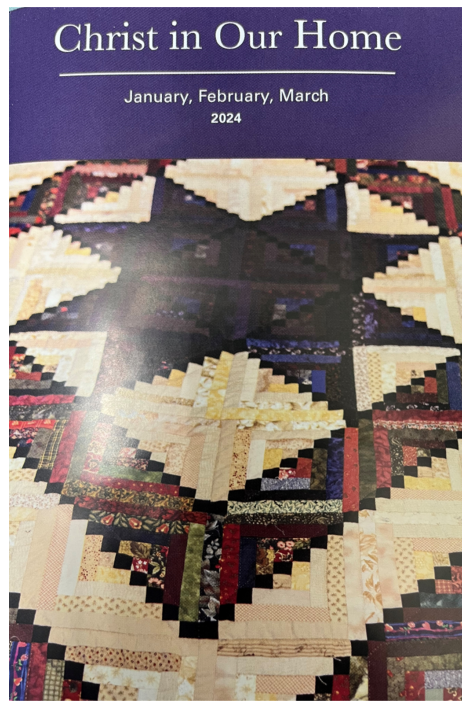
Amendments to the Constitution of Saint Andrew Lutheran Church will be voted upon at the upcoming Annual Meeting of the congregation on Jan 28, 2024.

The proposed draft of the amended Constitution of Saint Andrew is available [here](#) or at the Information Desk at Saint Andrew. Amendments to the SALC bylaws which will be voted on are noted on the first page as well as the changes annotated in the body of the document.

The summary of the amendments to the mandatory provisions of the model constitution for congregations can be found [here](#).

A copy of the draft document is available at the Information Desk at Saint Andrew.

---



## Christ in Our Home Devotionals

The 2024 first quarter of "Christ In Our Home" devotionals are available in the Narthex. All are welcome to pick up a copy for your family.

---

## Epiphany Pageant - Save the Date

***Sunday, January 7***

More details and sign-up coming soon!

---

### Worship

**Sundays**

**9:00 am**

***(The Sanctuary is  
T-Coil Hearing Loop Enabled)***



### Office Hours

**Monday-Thursday**

**8:30 am-4:30 pm**

### Recorded Worship on Spectrum

Sunday worship is livestreamed on the SALC Facebook page each week. The recorded service can then be found on channel 980 through Charter/Spectrum on the following days and times:

Tuesday - 2:00 pm

Thursday - 10:30 am

Friday - 6:00 pm

Sunday - 7:00 am

---

**SALC Calendar**



[About](#)

[Worship](#)

[Education](#)

[Calendar](#)

[Contact Us](#)

## Saint Andrew Lutheran Church

(715) 842-3333

[office@salc-wausau.org](mailto:office@salc-wausau.org)

[www.salc-wausau.org](http://www.salc-wausau.org)



Saint Andrew Lutheran Church | [150202 County Road NN, Wausau, WI 54401](#) 7158423333

[Unsubscribe@lutheran.org](mailto:Unsubscribe@lutheran.org)